

INDIRA MAHAVIDYALAYA

KALAMB, DIST. YAVATMAL 445401

www.indiramahavidyalaya.com

AISHE ID: C-42925

Institution Track ID: MHCOGN15368

Criterion 7

Institutional Values and Best Practices



KEY INDICATOR 7.1

Institutional Values and Social Responsibilities



Environmental Consciousness and Sustainability and
Divyangjan friendly initiatives

Metric No. 7.1.2 (QnM)

The Institution has facilities and initiatives for

1. Alternate sources of energy and energy conservation measures
2. Management of the various types of degradable and non-degradable waste
3. Water conservation
4. Green campus initiatives
5. Disabled-friendly, barrier free environment

Geo Tagged Photographs of the Facilities

Environmental Consciousness and Sustainability and Divyangjan friendly initiatives

Table of Content

S.N.	Particulars
1	Declaration
2	Geo-Tagged Photographs of Alternate Sources of Energy and Energy Conservation Measures.
	Geo-Tagged Photographs of <ul style="list-style-type: none"> • Solar Power Generation Systems (Solar Panels). • LPG - Gas Powered Electric Generator • Invertor Back Up for Alteration • Large Capacity Invertor • LED Light Fittings In Seminar Hall. • LED Floodlight Usage In Corridor • Large Windows to Reduce Artificial Light Use.
3	Geo-Tagged Photographs of Management of The Various Types of Degradable and Non-Degradable Waste
	Geo-Tagged Photographs of <ul style="list-style-type: none"> • Large Dustbins Throughout Campus • Composting Pits • Proper Soak -Pit For Chemical And Hazardous Waste Disposal. • Various Plastic Free Campus Signboards Are Displayed Throughout • Regular Cleaning Drives Are Conducted.
4	Geo Tagged Photographs of Water Conservation System and Sources of Water Conservation
	Geo-Tagged Photographs of <ul style="list-style-type: none"> • Large Capacity Water Reservoir • Rain Water Harvesting Pipelines. • Open – Well • Constructed Water Trench
4	Geo-Tagged Photographs of Green Campus Initiatives
	Geo-Tagged Photographs of <ul style="list-style-type: none"> • Sign Boards Indicating to Save Energy Near Electrical Fittings. • Parking Is Kept Far from College Buildings • Carpooling For Daily College Commutes • Promotion Of Use of Electric Vehicle. • Yearly Tree Plantation Drives
5	Geo-Tagged Photographs of Disabled-Friendly, Barrier Free Environment

	Geo-Tagged Photographs
--	-------------------------------

- Ramp For Divyangjan For Exam Hall Entry
- Ramp For Divyangjan For Office Entry
- Ramp For Divyangjans For College D Block Entry
- Restroom For Divyangjan
- Ramp And Rails To Assist Divyangjans To Toilet.
- Toilets For Divyangjan
- Wheelchair For Divyangjan To Mobilise In The Campus

Dr. Yashwant Moreshwar Donde Sarwajanik Shaikshanik Trust's

INDIRA MAHAVIDYALAYA

KALAMB, DIST. YAVATMAL, MAHARASHTRA 445401

Principal: 9422867658

IQAC Co-Ordinator: 8668564641

NAAC Accredited with 'B+' Grade, Under UGC Section 2(f) and 12 (B)

College Code-414

AISHE: C-42925

E mail - imvkalamb@yahoo.co.in

Website - www.indiramahavidyalaya.com

Declaration

The information, reports, true copies of the supporting documents, numerical data, etc. furnished in this file is verified by IQAC and found correct.

Subraole
Co-ordinator
IQAC
Indira Mahavidyalaya
Kalamb



P. B. Mandake
PRINCIPAL
Indira Mahavidyalaya
Kalamb Dist. Yavatmal

**Geo-tagged Photographs of
Alternate Sources of Energy and Energy Conservation Measures**

- **Solar Power Generation Systems (Solar Panels)**



- **4 KW solar panel is installed.**



- **LPG - Gas Powered Electric Generator - In the Instance of Major Power Failure which emits less pollutant as compared to Diesel Generators**



- **Gas powered Electric Generator is always on Standby**



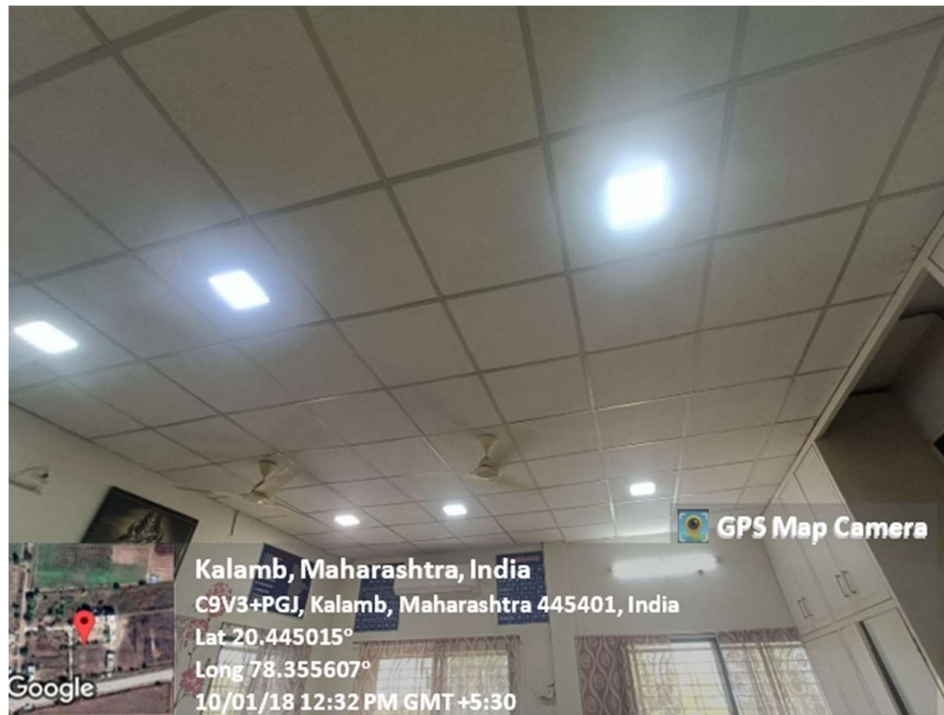
- **Investors - As a Backup for Short Period Power Failures, Which Are Devoid of Any Pollution During Operation**



- **Large Capacity Invertor**



- Use of Power Efficient LED lights



- LED light fittings in Seminar Hall



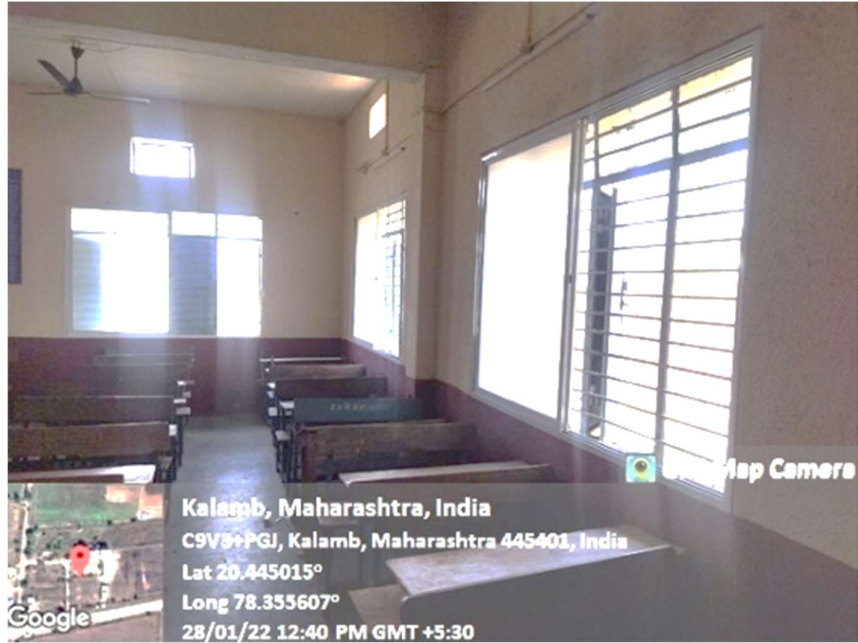
- **Led Floodlight**



- **LED Light Fitting**



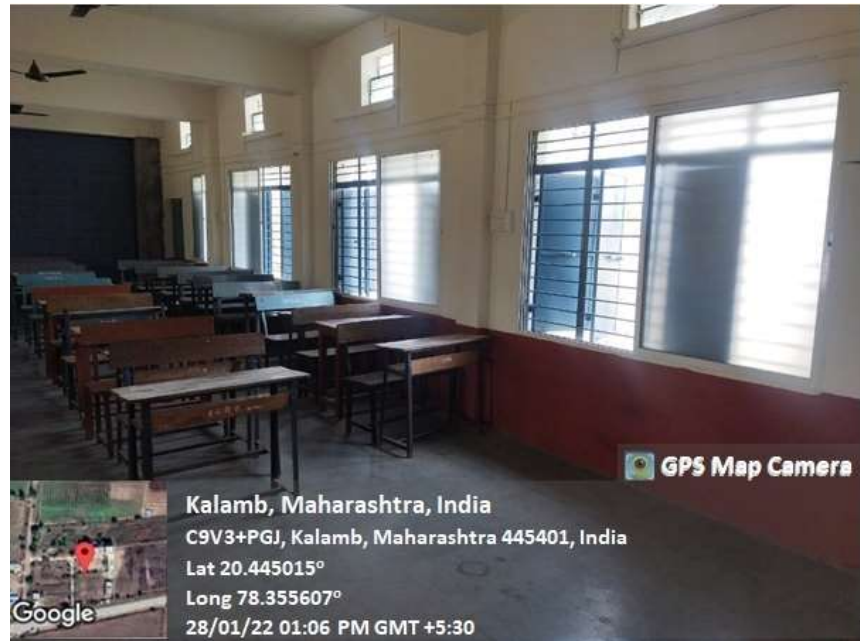
- Halls and Classrooms are Having Large Windows to Reduce Artificial Light Use.



- Seminar Hall



- Large Classroom with Large Windows



- Classroom with Large Windows

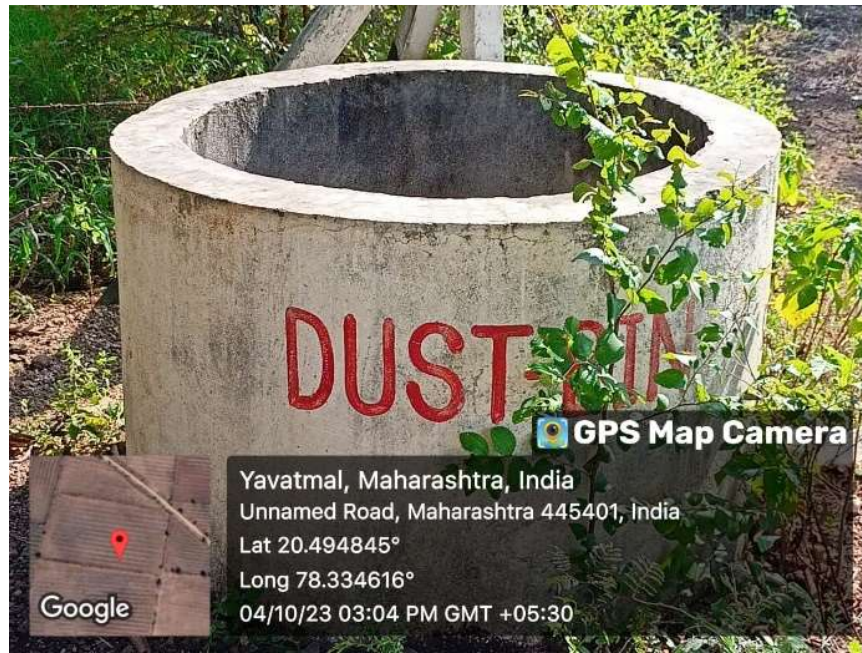


**Geo-tagged Photographs of
Management of the Various Types of Degradable
and Non-Degradable Waste**

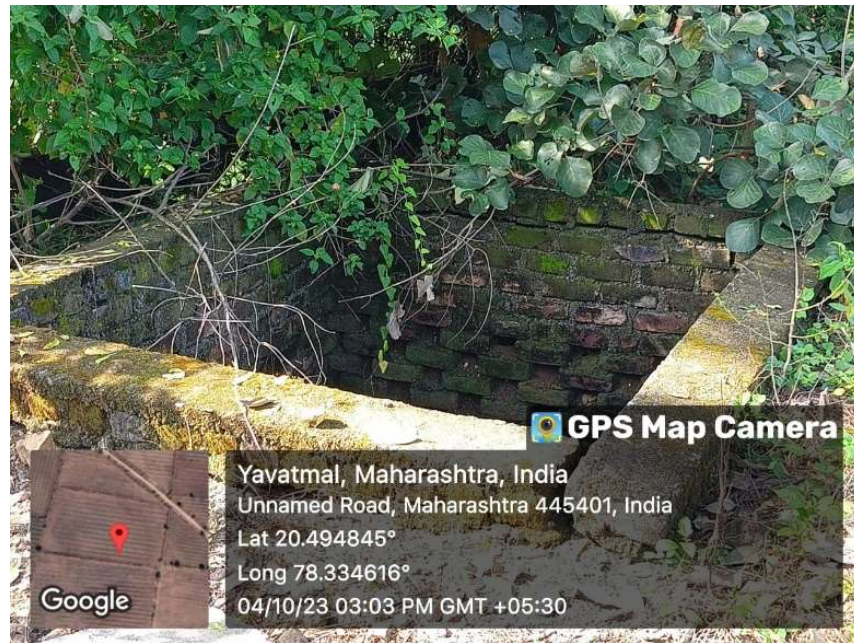
- Large Dustbins are Placed Throughout Campus



- Large Dustbins are Placed Throughout Campus



- **Composting Pits are Constructed for Proper Disposal of Degradable Wastes**



- **Compost Pit is Made for Degradable Wastes**



- Soak - Pit Is Created for Chemical and Hazardous Waste Material



- Various Plastic Free Campus Signboards are Displayed Throughout Campus



- Various Signboards are Displayed Throughout Campus



- **Regular Cleaning Drives are Conducted**



Geo-tagged Photographs for Water Conservation

- **Large Capacity Water Reservoir is Constructed in College Campus to Store and Increase Ground Water Level**



- **This Reservoir Proved to Replenish Water to Great Extent**



- Pipelines Taking Water from Roofs to Water Reservoir are Present Making It Efficient in Rainwater Harvesting



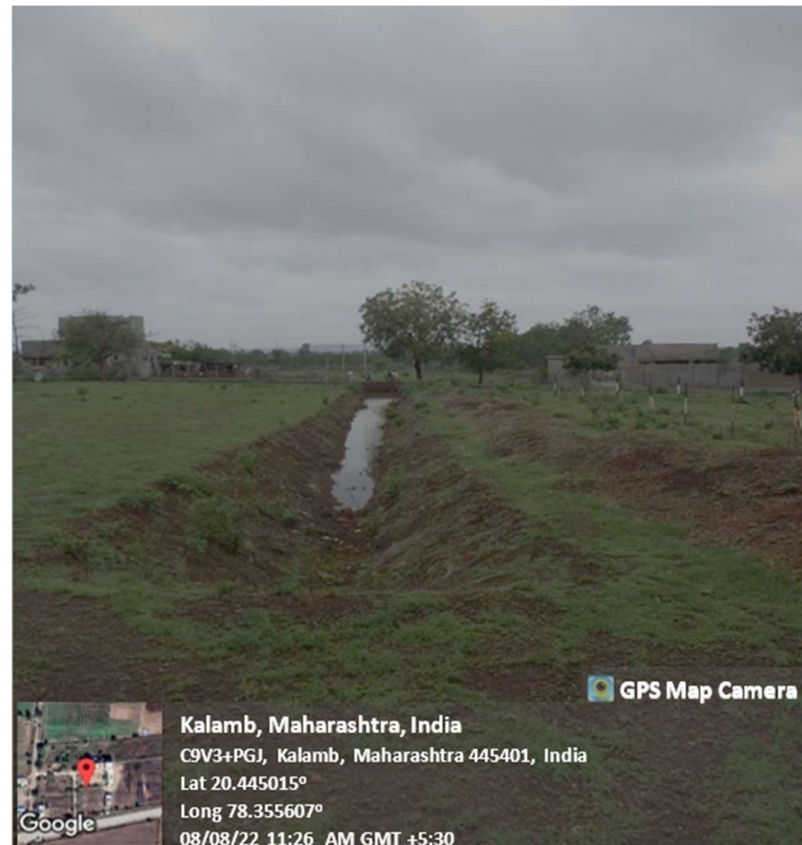
- Pipelines From all the Rooftop Outlets Are Connected to Water Reservoir



- **Open Well is Present in Campus Which is Also Used for Monitoring Ground Water Level**



- **Trench for Storage and as an Obstacle for Rainwater Runoff**



Geo-tagged Photographs of Green Campus Initiatives

- **Sign Boards Indicating to Save Energy Near Electrical Fittings**



- **Sign Boards Indicating to Save Energy Near Electrical Fittings**



- **Parking is Kept Far from College Buildings**



- **Parking is Kept Far from College Buildings**



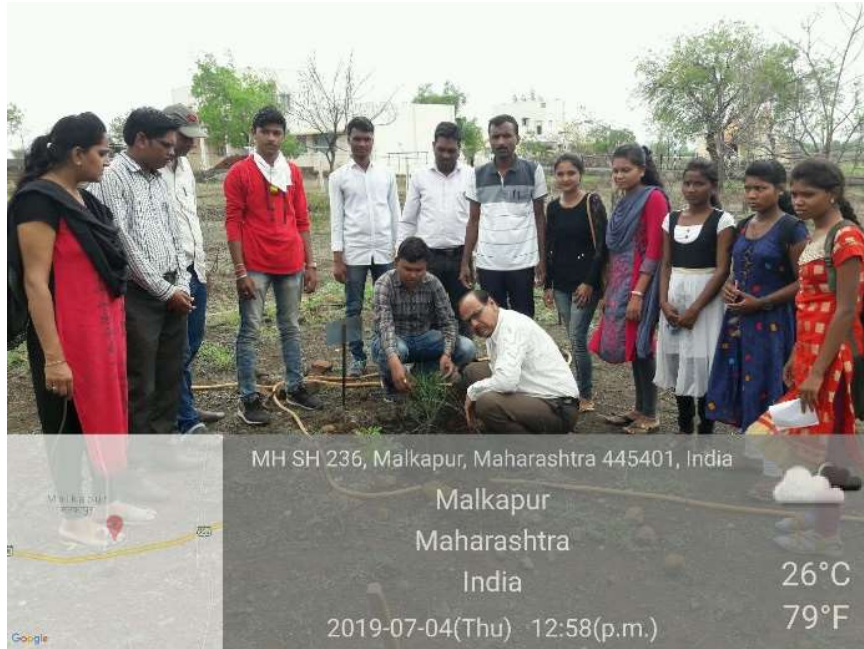
- **Carpooling for Daily College Commutes**



- **Promotion of Use of Electric Vehicle**

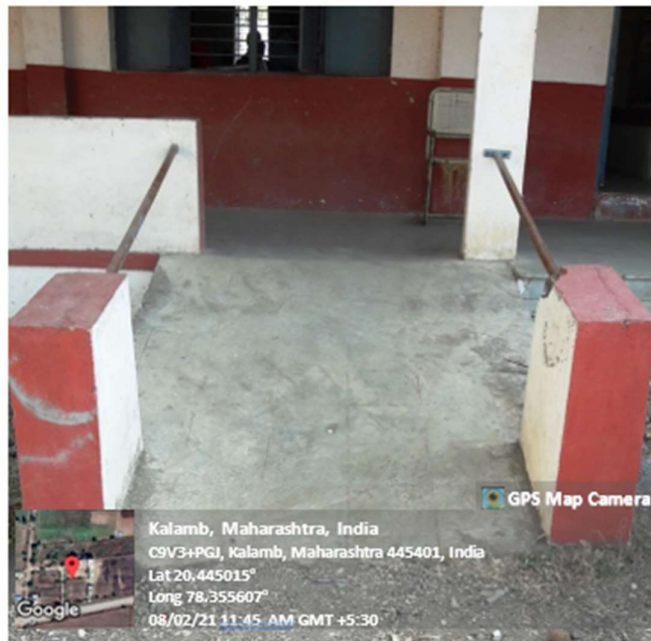


- **Yearly Tree Plantation Drives**



**Geo-tagged Photographs
of
Disabled-Friendly, Barrier Free Environment**

- Ramp for Divyangjans for Exam Hall Entry



- Ramp for Divyangjans for Office Entry

-



- Ramp for Divyangjans for College D Block Entry



- Restroom for Divyangjans



- Restroom for Divyangjans



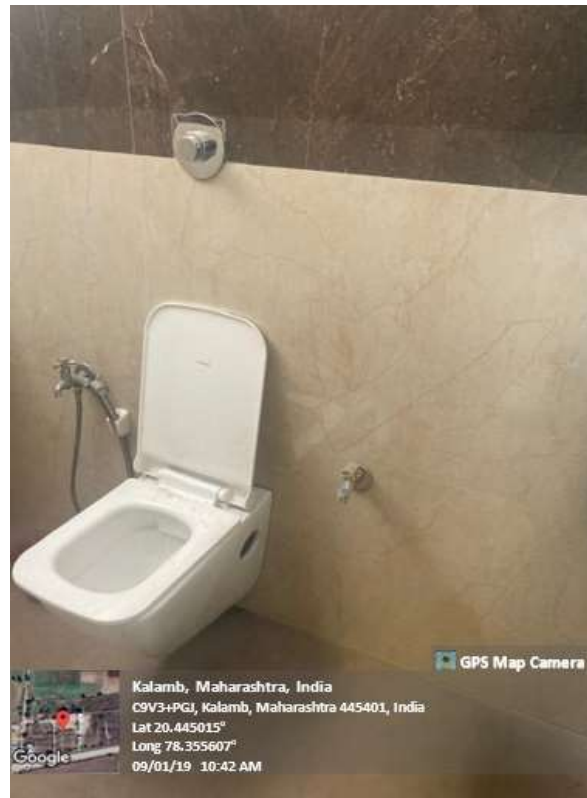
- Ramp and Rails to Assist Divyangjans to Toilet



- **Toilets for Divyangjans**



- **Toilets for Divyangjans**



- **Wheelchair for Divyangjans**

